

Forey Trust Land Auction – Tract 3

NE 1/4 Section 32, West Bend Township, Palo Alto County



Gross acres: 159 m/l (to be surveyed)

Crop acres: 151.29

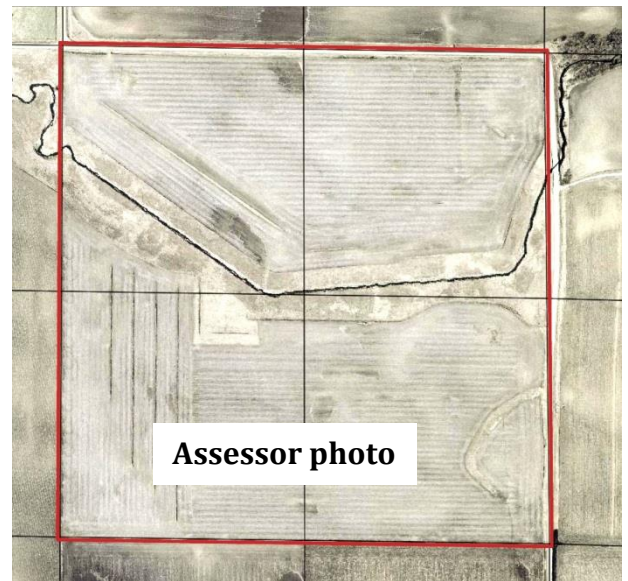
Real Estate Taxes: \$2722 annually

CSR: 65.3 **CSR2:** 75.7

(soil map on back)

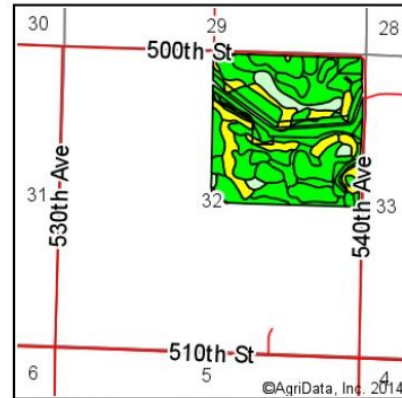
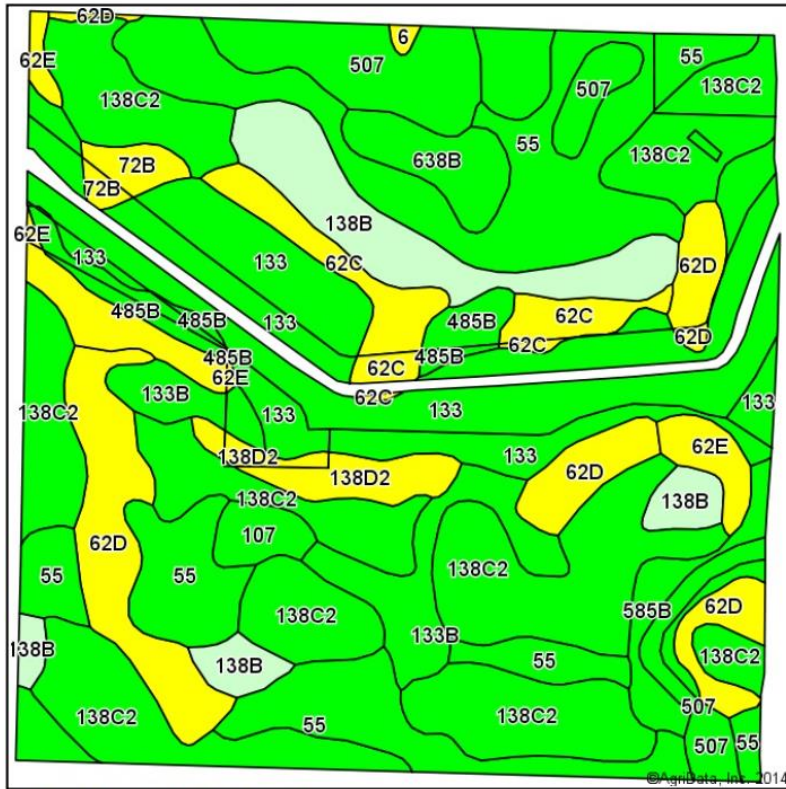
FSA Information

Cropland acres	151.3
Corn Base acres	73.5
Corn Direct / CC Yield	124 / 124
Soybean Base acres	55.9
Soybean Base acres	36 / 36
CRP: 2.9 acres @ \$137.66/ac	2004-2019
15.4 acres @ \$238.54/ac	2012-2022
1.2 acres @ \$209.60/ac	2008-2019
1.2 acres @ \$102.00/ac	2008-1028

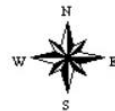


ACRE Co. Farm Real Estate
Spencer, Iowa
712-262-3529 theacreco.com





State: Iowa
 County: Palo Alto
 Location: 32-94N-31W
 Township: West Bend
 Acres: 151.29
 Date: 11/14/2014



Soils data provided by USDA and NRCS.

Area Symbol: IA147, Soil Area Version: 19

Code	Soil Description	Acres	Percent of field	**CSR2 Legend	Non-Irr Class	CSR2**	CSR
138C2	Clarion loam, 6 to 10 percent slopes, moderately eroded	40.17	26.6%		IIIe	83	58
55	Nicollet clay loam, 1 to 3 percent slopes	26.51	17.5%		I	88	84
133	Colo silty clay loam, 0 to 2 percent slopes	24.58	16.2%		IIw	74	75
62D	Storden loam, 9 to 14 percent slopes	11.89	7.9%		IIIe	37	39
138B	Clarion loam, 2 to 6 percent slopes	9.56	6.3%		IIe	90	76
507	Canisteo silty clay loam, 0 to 2 percent slopes	7.59	5.0%		IIw	88	74
133B	Colo silty clay loam, 2 to 4 percent slopes	6.14	4.1%		IIw	80	64
62C	Storden loam, 5 to 9 percent slopes	4.98	3.3%		IIIe	62	48
62E	Storden loam, 14 to 18 percent slopes	4.43	2.9%		IVe	25	30
585B	Colo-Spillville complex, 2 to 5 percent slopes	3.92	2.6%		IIe	77	60
638B	Clarion-Storden loams, 2 to 5 percent slopes	2.90	1.9%		IIe	80	62
485B	Spillville loam, 2 to 5 percent slopes	2.88	1.9%		IIe	89	76
138D2	Clarion loam, 9 to 14 percent slopes, moderately eroded	2.77	1.8%		IIIe	54	51
107	Webster clay loam, 0 to 2 percent slopes	1.40	0.9%		IIw	86	79
72B	Estherville loam, 2 to 5 percent slopes	1.39	0.9%		IIIs	18	48
6	Okoboji silty clay loam, 0 to 1 percent slopes	0.18	0.1%		IIIw	55	54
Weighted Average						75.7	65.3