

Forey Trust Land Auction – Tract 2

NW 1/4 Section 32, West Bend Township, Palo Alto County



Gross acres: 160 m/l (to be surveyed)

Crop acres: 155.3

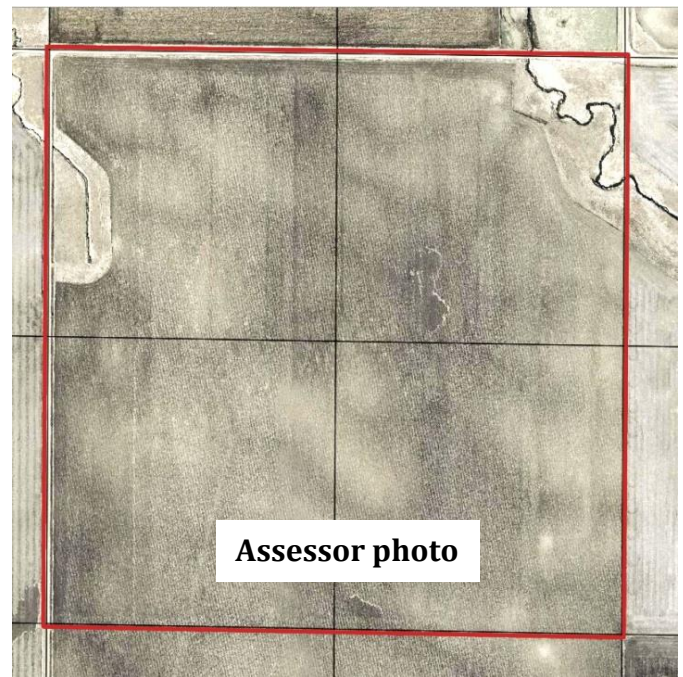
Real Estate Taxes: \$3514 annually

CSR: 72.4 **CSR2:** 84.6

(soil map on back)

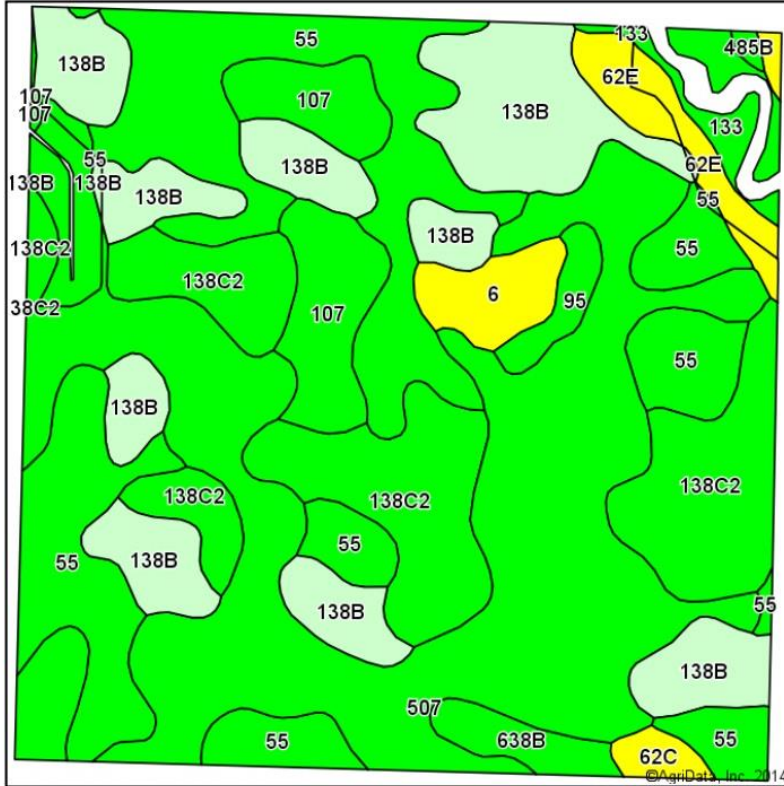
FSA Information (combined w/ Tract 1)

Cropland acres	309.86
Corn Base acres	226.8
Corn Direct / CC Yield	124 / 124
Soybean Base acres	69.5
Soybean Base acres	36 / 36
CRP: 4.7 acres @ \$208.08/ac	2012-2022
3.4 acres @ \$232.37/ac	2008-2023

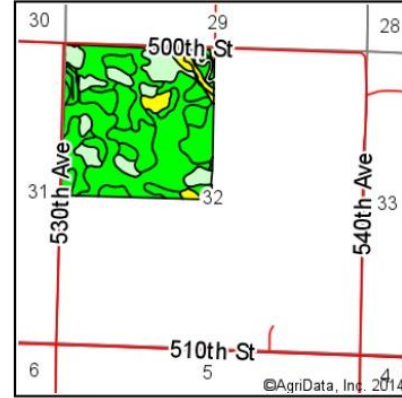


ACRE Co. Farm Real Estate
Spencer, Iowa
712-262-3529 theacreco.com





Soils data provided by USDA and NRCS.



State: Iowa
 County: Palo Alto
 Location: 32-94N-31W
 Township: West Bend
 Acres: 155.3
 Date: 11/14/2014



Area Symbol: IA147, Soil Area Version: 19

Code	Soil Description	Acres	Percent of field	**CSR2 Legend	Non-Irr Class	CSR2**	CSR
507	Canisteo silty clay loam, 0 to 2 percent slopes	48.75	31.4%		IIw	88	74
55	Nicollet clay loam, 1 to 3 percent slopes	35.06	22.6%		I	88	84
138B	Clarion loam, 2 to 6 percent slopes	25.24	16.3%		IIe	90	76
138C2	Clarion loam, 6 to 10 percent slopes, moderately eroded	23.85	15.4%		IIIe	83	58
107	Webster clay loam, 0 to 2 percent slopes	8.13	5.2%		IIw	86	79
62E	Storden loam, 14 to 18 percent slopes	3.85	2.5%		IVe	25	30
6	Okoboji silty clay loam, 0 to 1 percent slopes	3.01	1.9%		IIIw	55	54
133	Colo silty clay loam, 0 to 2 percent slopes	2.47	1.6%		IIw	74	75
638B	Clarion-Storden loams, 2 to 5 percent slopes	2.11	1.4%		IIe	80	62
95	Harps clay loam, 0 to 2 percent slopes	1.56	1.0%		IIw	72	59
62C	Storden loam, 5 to 9 percent slopes	1.04	0.7%		IIIe	62	48
485B	Spillville loam, 2 to 5 percent slopes	0.23	0.1%		IIe	89	76
Weighted Average						84.6	72.4