

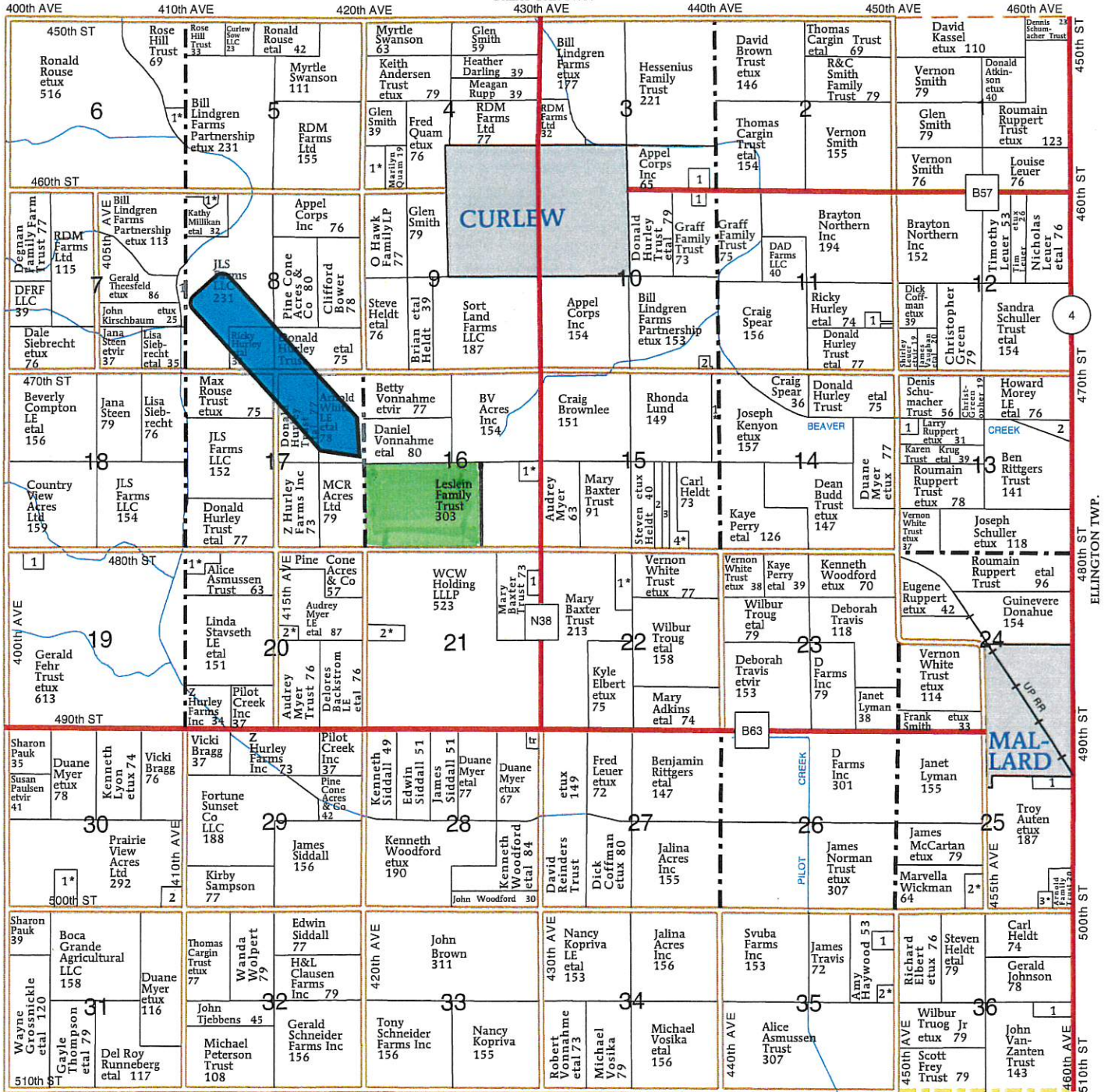
T-94-N

# RUSH LAKE PLAT

R-33-W

(Landowners)

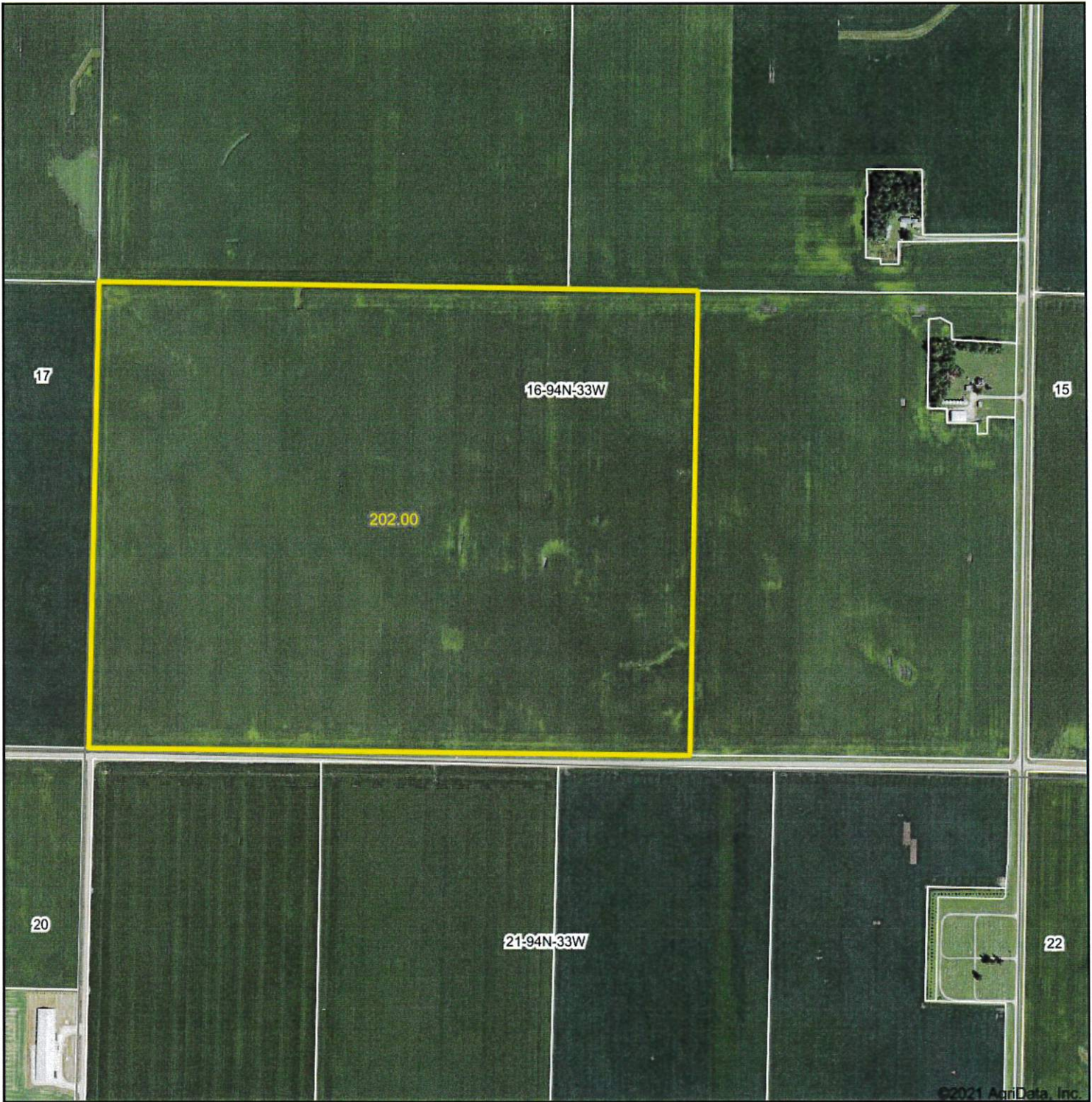
GREAT OAK TWP.



POCAHONTAS CO.



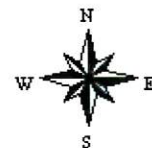
# Aerial Map



Map Center: 42° 57' 20.65, -94° 44' 51.89



**16-94N-33W**  
**Palo Alto County**  
**Iowa**



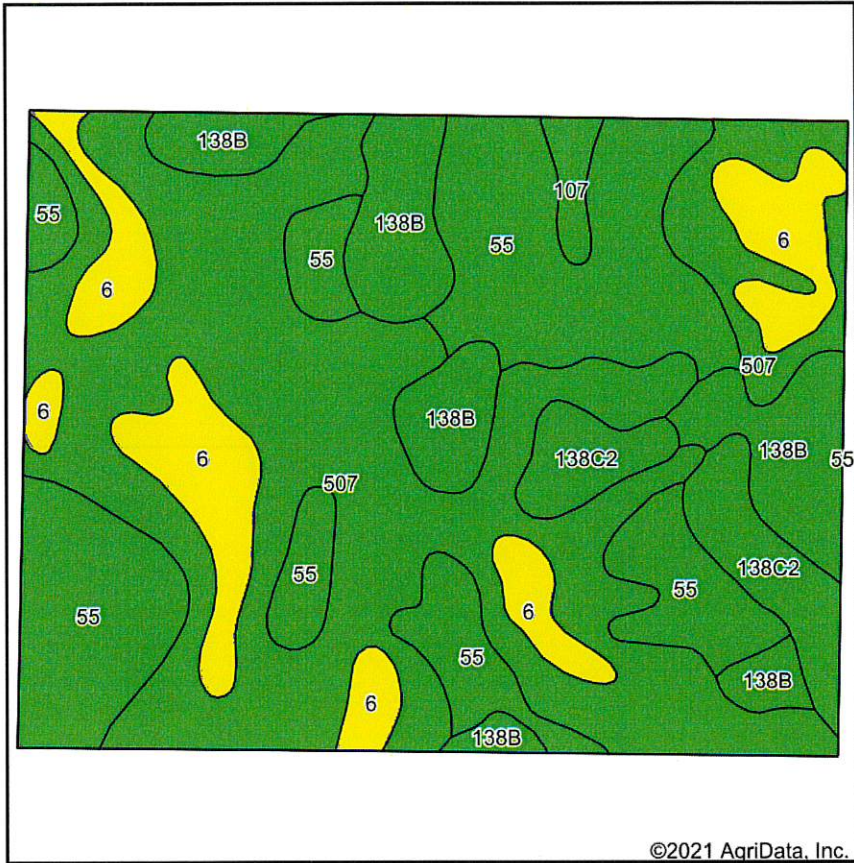
5/21/2021



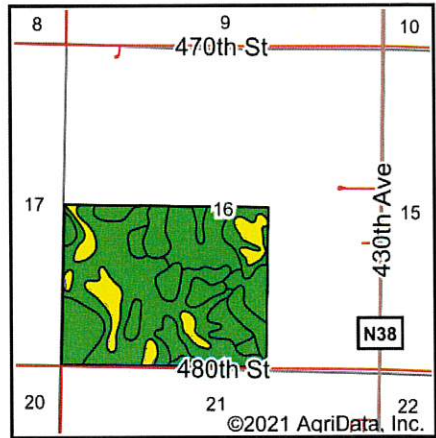
Field borders provided by Farm Service Agency as of 5/21/2008.



# Soils Map



Soils data provided by USDA and NRCS.



State: Iowa  
 County: Palo Alto  
 Location: 16-94N-33W  
 Township: Rush Lake  
 Acres: 202  
 Date: 5/21/2021



Maps Provided By



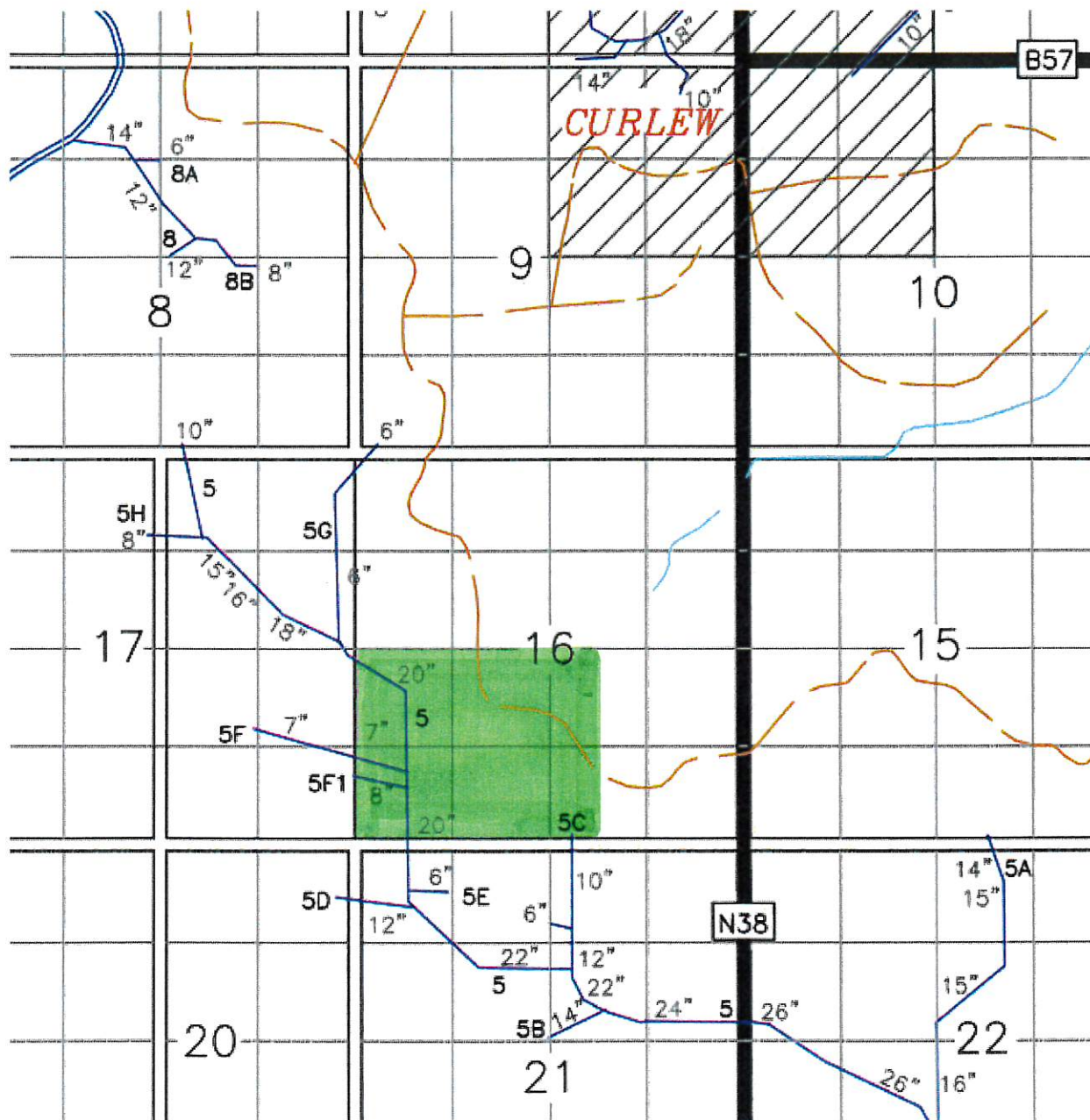
Area Symbol: IA147, Soil Area Version: 27

Code	Soil Description	Acres	Percent of field	CSR2 Legend	Non-Irr Class *c	CSR2**	CSR
507	Canisteo clay loam, 0 to 2 percent slopes	86.23	42.7%		llw	84	74
55	Nicollet clay loam, 1 to 3 percent slopes	54.35	26.9%		lw	89	84
138B	Clarion loam, 2 to 6 percent slopes	25.20	12.5%		lle	89	76
6	Okoboji silty clay loam, 0 to 1 percent slopes	23.10	11.4%		lllw	59	54
138C2	Clarion loam, 6 to 10 percent slopes, moderately eroded	11.09	5.5%		llle	83	58
107	Webster clay loam, 0 to 2 percent slopes	2.03	1.0%		llw	86	79
<b>Weighted Average</b>						<b>83.1</b>	<b>73.8</b>

\*\*IA has updated the CSR values for each county to CSR2.

\*c: Using Capabilities Class Dominant Condition Aggregation Method

Soils data provided by USDA and NRCS.



Drainage District tile map

JT No 63