

# Forey Trust Land Auction – Tract 4

SE 1/4 Section 30, West Bend Township, Palo Alto County  
minus a building site



**Gross acres:** 150 m/l (to be surveyed)

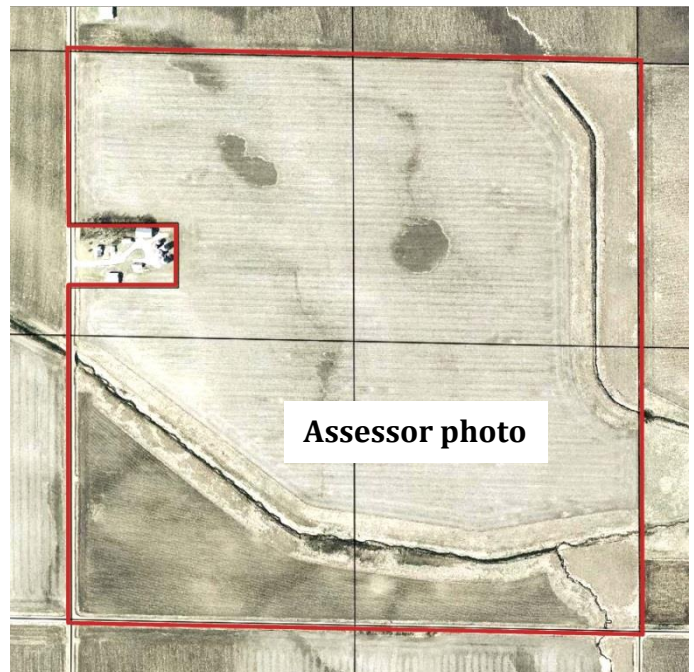
**Crop acres:** 146.9

**Real Estate Taxes:** \$3348 annually

**CSR:** 70.3      **CSR2:** 75.2  
(soil map on back)

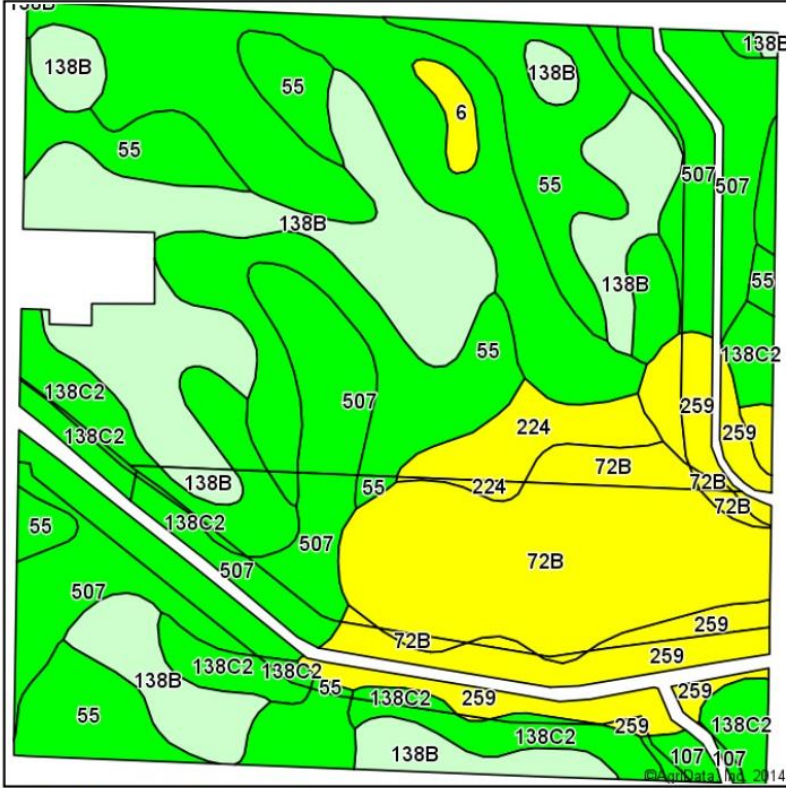
## FSA Information

Cropland acres	146.9
Corn Base acres	71.0
Corn Direct / CC Yield	124 / 124
Soybean Base acres	47.2
Soybean Base acres	36 / 36
CRP: 13.9 acres @ \$227.13/ac	2012-2023
1.0 acre @ \$232.37/ac	2008-2023
11.2 acres @ \$355.02	2014-2024

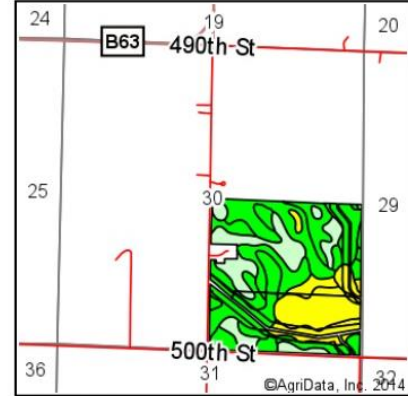


**ACRE Co. Farm Real Estate**  
Spencer, Iowa  
712-262-3529 [theacreco.com](http://theacreco.com)

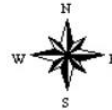




Soils data provided by USDA and NRCS.



State: Iowa  
 County: Palo Alto  
 Location: 30-94N-31W  
 Township: West Bend  
 Acres: 146.9  
 Date: 11/14/2014



Area Symbol: IA147, Soil Area Version: 19

Code	Soil Description	Acres	Percent of field	**CSR2 Legend	Non-Irr Class	CSR2**	CSR
507	Canisteo silty clay loam, 0 to 2 percent slopes	40.99	27.9%		IIw	88	74
138B	Clarion loam, 2 to 6 percent slopes	28.57	19.4%		Ile	90	76
55	Nicollet clay loam, 1 to 3 percent slopes	28.17	19.2%		I	88	84
72B	Estherville loam, 2 to 5 percent slopes	18.68	12.7%		IIIs	18	48
138C2	Clarion loam, 6 to 10 percent slopes, moderately eroded	14.40	9.8%		IIle	83	58
259	Biscay clay loam, 0 to 2 percent slopes	10.56	7.2%		IIw	49	70
224	Linder loam, 0 to 2 percent slopes	3.69	2.5%		IIs	56	45
6	Okoboji silty clay loam, 0 to 1 percent slopes	0.98	0.7%		IIlw	55	54
107	Webster clay loam, 0 to 2 percent slopes	0.86	0.6%		IIw	86	79
<b>Weighted Average</b>						<b>75.2</b>	<b>70.3</b>